

# 116TH MEDICAL DEVELOPMENT

PROPOSED NEW CONSTRUCTION

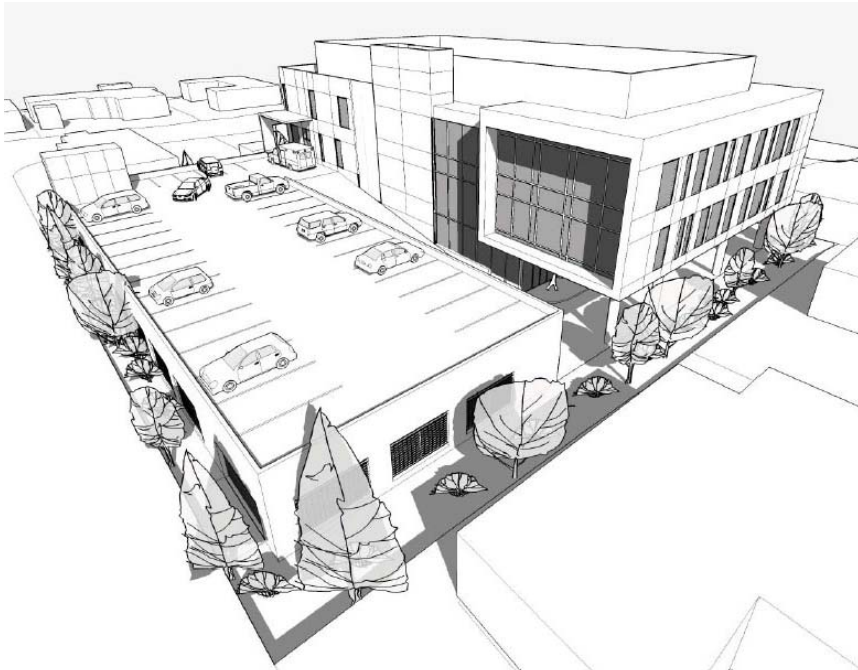
1835 116th Ave NE, Bellevue, WA

PRIME LOCATION IN BELLEVUE MEDICAL CORE

## BIRDSEYE VIEWS



**Southeast Birdseye**



**Southwest Birdseye**



**Northwest Birdseye**

For more information contact:

Ann Bishop

[bishop@wallaceproperties.com](mailto:bishop@wallaceproperties.com)

(425) 283-1658 (direct)

(206) 229-7523 (mobile)

The information contained herein has been obtained from sources deemed reliable but is not guaranteed.

