



WALLACE
PROPERTIES

330 112th Ave NE, Suite 200
Bellevue, WA 98004
425-455-9976
www.wallaceproperties.com



NORDSTROM TOWER

1229 MADISON ST. SUITE 1440 | SEATTLE, WA

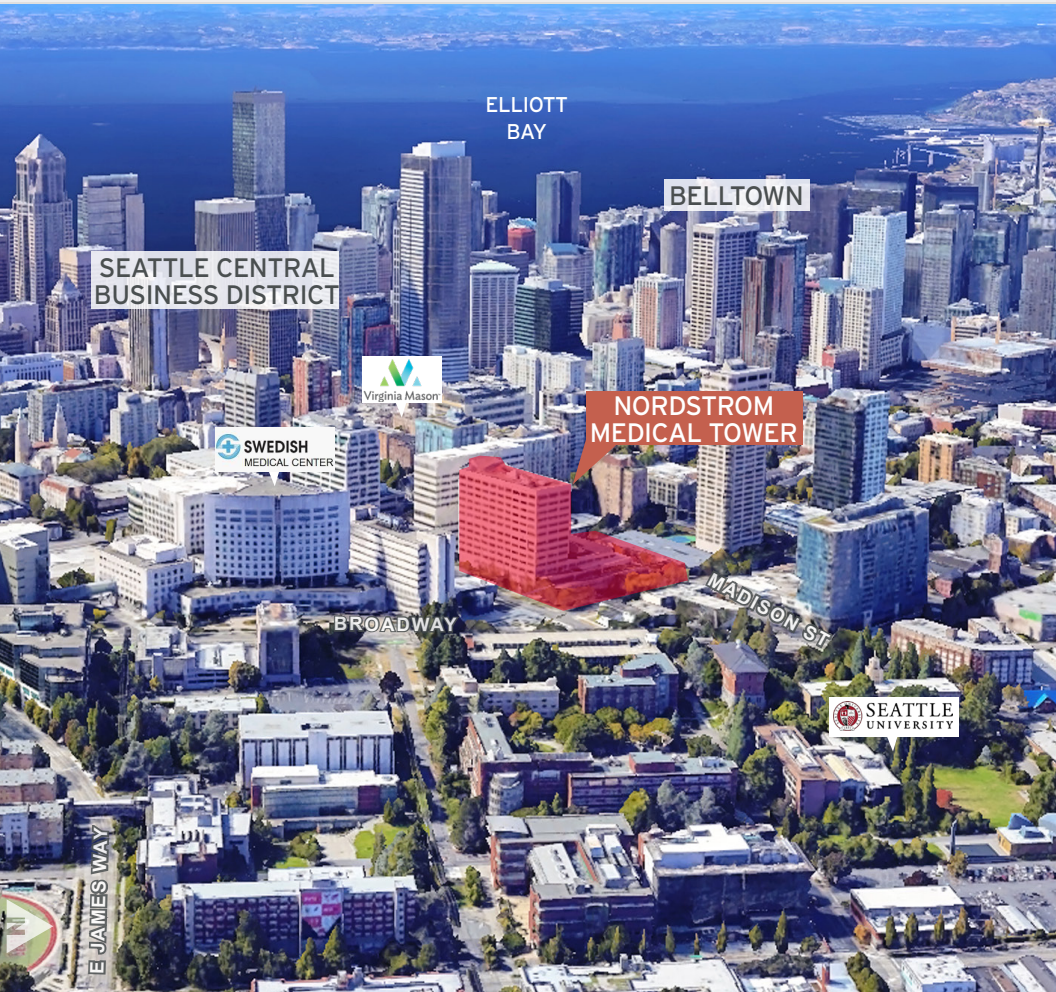
FOR LEASING INFORMATION, PLEASE CONTACT:

Ann Bishop, MBA
Senior Vice President
bishop@wallaceproperties.com
206-229-7523

Tom Gockel
Vice President
tgockel@wallaceproperties.com
425-246-6479

NORDSTROM TOWER

PROPERTY DETAILS



AVAILABLE:

- SUITE 1440: 2,352 RSF
- RENTAL RATE: \$41.00/RSF/NNN

FEATURES:

- MOVE-IN READY MEDICAL OFFICE BUILD OUT
- RECENT UPGRADES INCLUDING NEW FLOORING, PAINT, RECEPTION DESK AND CABINETS
- ON-SITE PARKING GARAGE WITH 430 COVERED STALLS AND FREE SHORT-TERM PARKING
- STUNNING DOWNTOWN VIEWS
- PREMIER LOCATION IN SEATTLE'S MEDICAL DISTRICT
- WALK TO NEIGHBORHOOD RESTAURANTS AND CAFES



98

WALKERS PARADISE



95

EXCELLENT TRANSIT



90

VERY BIKEABLE

NORDSTROM TOWER

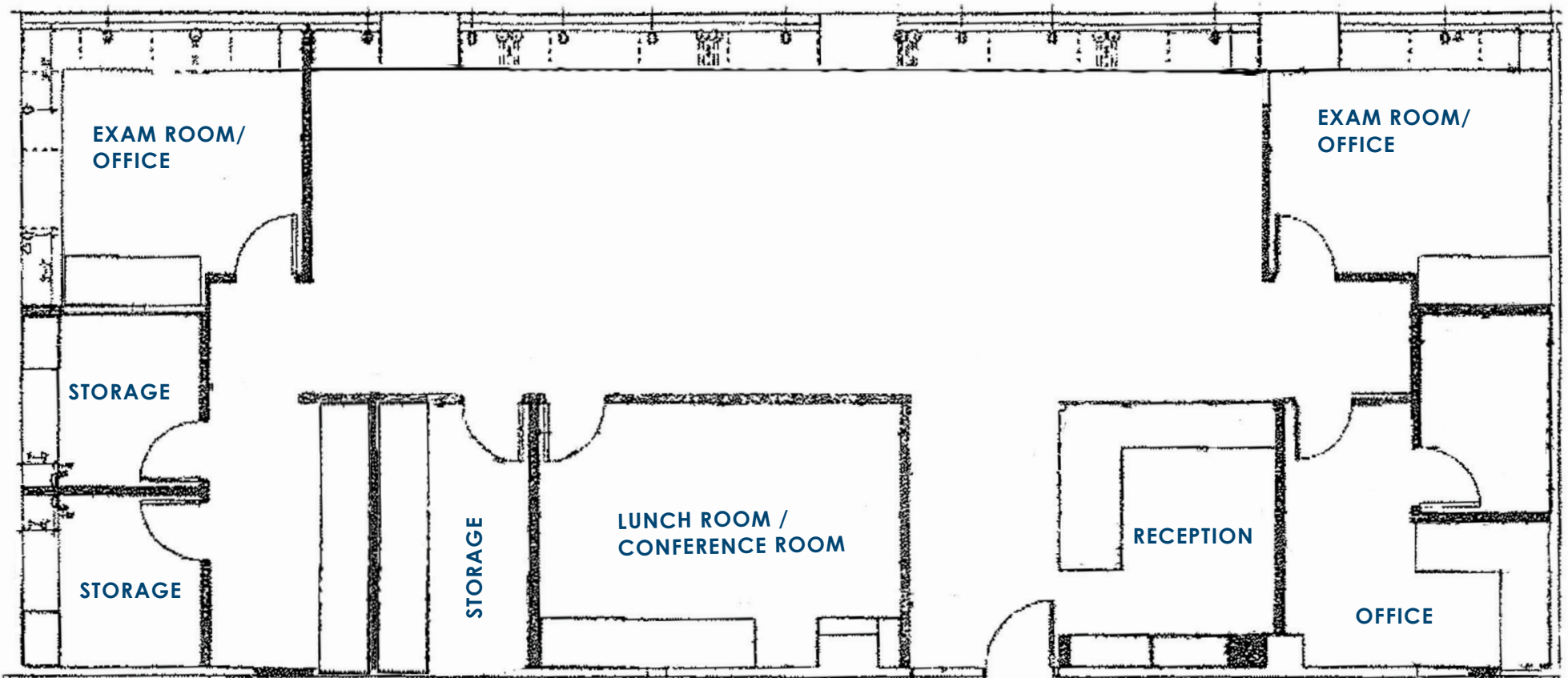
INTERIOR PHOTOS



NORDSTROM TOWER

FLOOR PLAN

SUITE	FLOOR	SIZE	RENTAL RATE
1440	14	2,352 RSF	\$41/RSF



NORDSTROM TOWER

DEMOGRAPHICS

Location Facts & Demographics

Demographics are determined by a 10 minute drive from 1229 Madison St, Seattle, WA 98104-3586

CITY, STATE

Seattle, WA

POPULATION

166,706

AVG. HHSIZE

1.91

MEDIAN HH INCOME

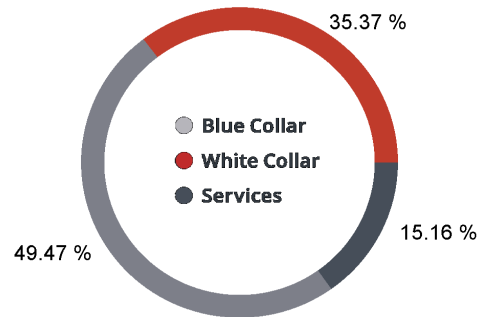
\$67,532

HOME OWNERSHIP

Renters: **62,075**

Owners: **27,855**

EMPLOYMENT



60.10 %
Employed

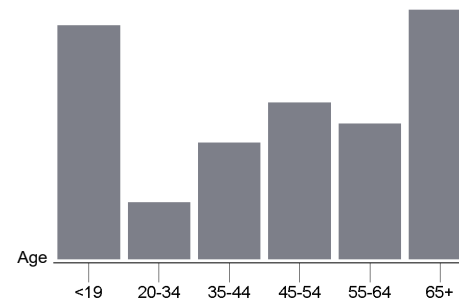
1.55 %
Unemployed

EDUCATION

High School Grad: **12.50 %**
Some College: **20.16 %**
Associates: **6.94 %**
Bachelors: **54.36 %**

GENDER & AGE

52.14 % **47.86 %**

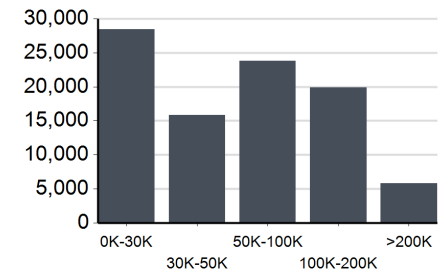


RACE & ETHNICITY

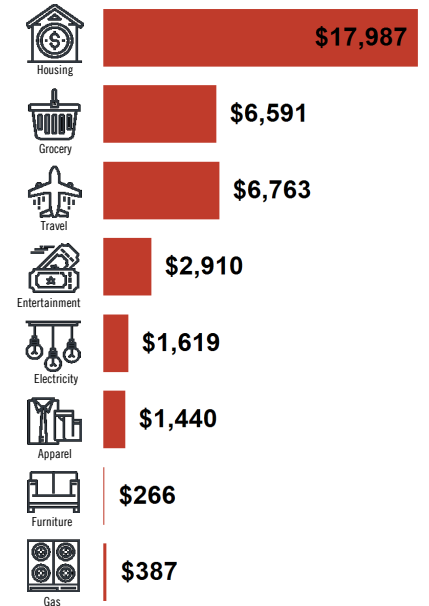
White: **60.21 %**
Asian: **13.14 %**
Native American: **0.55 %**
Pacific Islanders: **0.12 %**
African-American: **11.64 %**
Hispanic: **7.49 %**
Two or More Races: **6.84 %**



INCOME BY HOUSEHOLD



HH SPENDING



This information supplied herein is from sources we deem reliable. It is provided without any representation, warranty or guarantee, expressed or implied as to its accuracy. Prospective Buyer or Tenant should conduct an independent investigation and verification of all matters deemed to be material, including, but not limited to, statements of income and expenses. Consult your attorney, accountant, or other professional advisor.



Ann Bishop, MBA
Senior Vice President
bishop@wallaceproperties.com
206-229-7523

Tom Gockel
Vice President
tgockel@wallaceproperties.com
425-246-6479