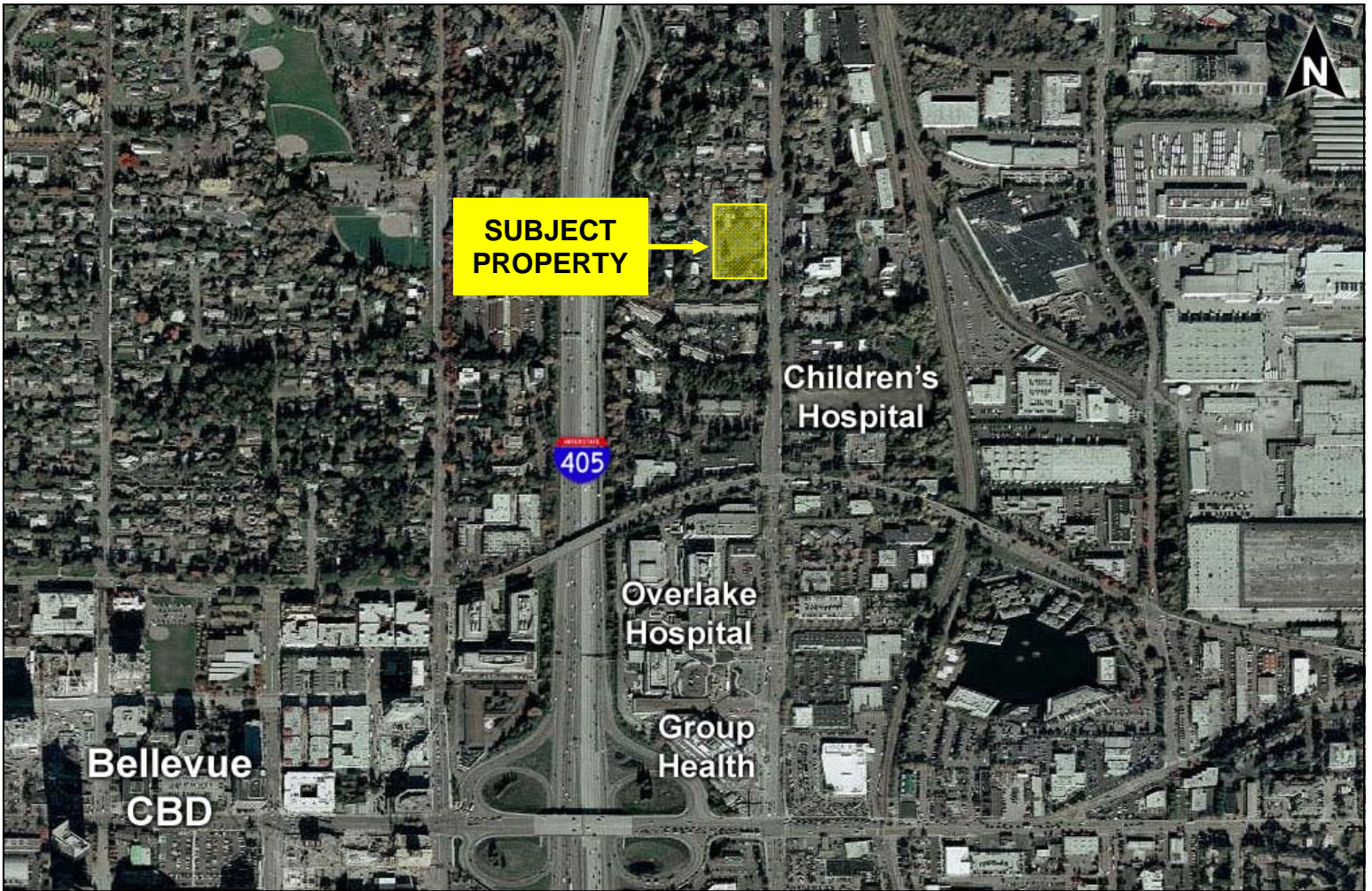


116TH MEDICAL DEVELOPMENT

PROPOSED NEW CONSTRUCTION

1835 116th Ave NE, Bellevue, WA

PRIME LOCATION IN BELLEVUE MEDICAL CORE



For more information contact:

Ann Bishop

bishop@wallaceproperties.com

(425) 283-1658 (direct)

(206) 229-7523 (mobile)

The information contained herein has been obtained from sources deemed reliable but is not guaranteed.

