

ELMER J. NORDSTROM MEDICAL TOWER

1229 Madison St, Suite 890, Seattle, WA

LOCATED IN SEATTLE'S FIRST HILL MEDICAL DISTRICT



SUITE NOTES:

- Suite 890
- Size: 2,308 RSF
- Asking rent: \$26.50/RSF NNN
- Tenant Improvement Allowance negotiable
- Available November 1, 2010
- Estimated 2010 operating expenses: \$13.75/RSF
- Suite features a waiting room for 12+ patients, 3 exam rooms, 2 private offices/consult rooms, small storage/file area, tech station, in-suite restroom and small break room
- Efficient floor plan maximizes productivity
- Magnificent views from doctor's offices

BUILDING AMENITIES:

- On-site parking with 430 covered stalls in garage
- Free short-term parking
- Building size: 193,026 SF
- Multiple medical specialties offer excellent referral sources

LOCATION HIGHLIGHTS:

- Easy access off I-5
- Premier location in Seattle's major medical market
- Walk to neighborhood style restaurants and cafes
- Starbucks, Tully's and espresso carts on-site or within one block

For more information contact:

Ann Bishop

bishop@wallaceproperties.com

(425) 283-1658 (Direct)

Wallace Properties, Inc.

330 112th Ave NE

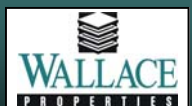
Bellevue, WA 98004

(425) 455-9976

www.wallaceproperties.com



The information contained herein has been obtained from sources deemed reliable but is not guaranteed.

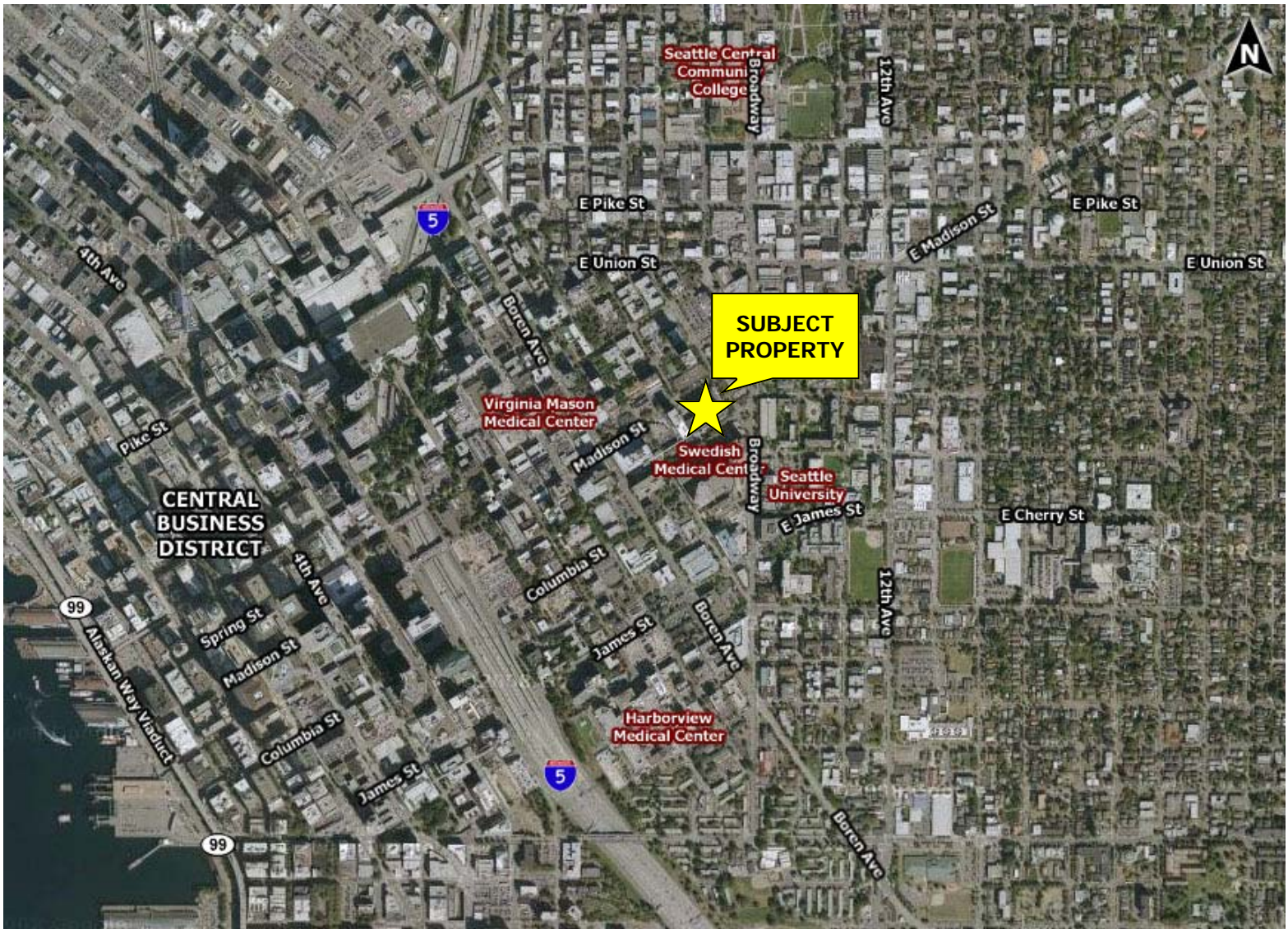


ELMER J. NORDSTROM MEDICAL TOWER

1229 Madison St, Suite 890, Seattle, WA

LOCATED IN SEATTLE'S FIRST HILL MEDICAL DISTRICT

AERIAL VIEW



For more information contact:

Ann Bishop

bishop@wallaceproperties.com

(425) 283-1658 (Direct)

Wallace Properties, Inc.

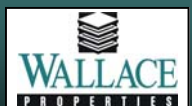
330 112th Ave NE

Bellevue, WA 98004

(425) 455-9976

www.wallaceproperties.com

The information contained herein has been obtained from sources deemed reliable but is not guaranteed.

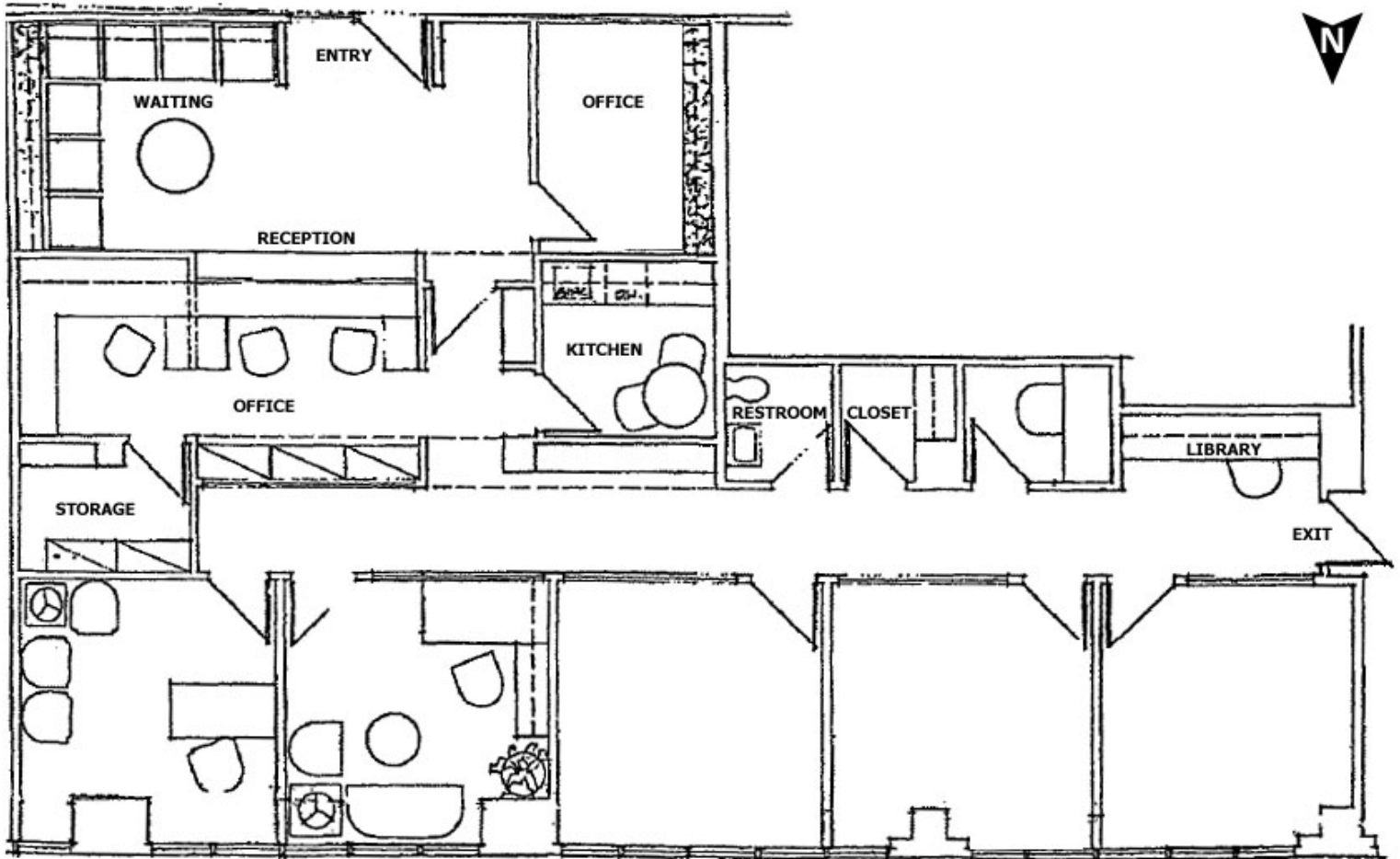


ELMER J. NORDSTROM MEDICAL TOWER

1229 Madison St, Suite 890, Seattle, WA

LOCATED IN SEATTLE'S FIRST HILL MEDICAL DISTRICT

FLOOR PLAN



Suite 890: 2,308 RSF

Asking rent: \$26.50/RSF NNN

Available November 1, 2010

For more information contact:

Ann Bishop

bishop@wallaceproperties.com

Wallace Properties, Inc.

330 112th Ave NE

Bellevue, WA 98004

(425) 455-9976

www.wallaceproperties.com

The information contained herein has been obtained from sources deemed reliable but is not guaranteed.

